

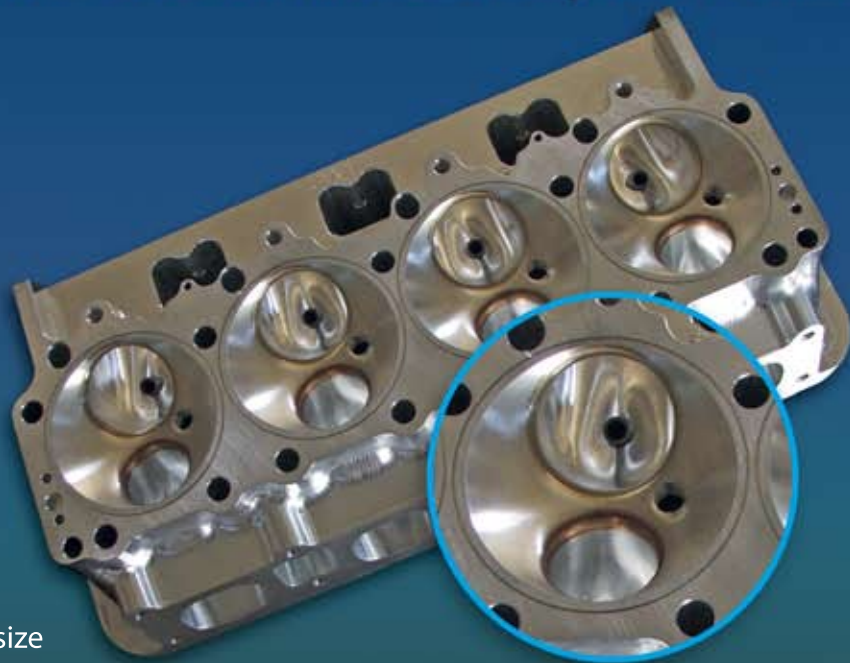
NHRA PRO MOD

BIG PORT

STAGE II MUSCLE HEADS

AJPE offers a new version of the 426 Hemi Alcohol cylinder head!

Track Proven
Pro Mod Power
Winning Races
Worldwide in 2010!



STAGE II BIG PORT FEATURES

- **CHAMBER VOLUME:** 97 cc, designed for a 4.467" bore size
- **VALVES:** 2.400" x 6.400" Intake vs. 1.900" x 6.200" Exhaust valves
- **INTAKE PORT VOLUME:** 383cc, with a 5.5% larger Port area vs. our std Stg II Pro Mod heads.
- **EXHAUST PORT VOLUME:** 199cc
- **COPPER VALVE SEATS:** protecting titanium valve faces & dampening any potential valve bounce
- **INTAKE MANIFOLD:** fits std Stg II Muscle head intake manifolds
- **EXHAUST HEADERS:** fits std Stg II Muscle Head headers, flanges & gaskets

VALVE LIFT/CFM	.900"	.800"	.700"	.600"	.500"	.400"	.300"	.200"
2.400" Intake Valve <small>97cc 4.467" Bore</small>	512	493	470	449	410	347	266	159
1.900" Exhaust Valve <small>197cc 4.467" Bore</small>	448	442	434	418	392	309	236	144

ALL FLOW TESTS DONE @ 28", ON 4.467" BORE, WITH INTAKE MANIFOLD & 2.500" ID EXHAUST PIPE.

TAKE ONE LOOK AT LEGENDARY AJPE DESIGN, ENGINEERING & PERFORMANCE
AND YOU TOO WILL MAKE THE SWITCH TO:

PHONE (805) 922-1202

FAX (805) 349-7129

1097 FOXEN CANYON RD.
SANTA MARIA, CA 93454

www.alanjohnsonperformance.com

AJPE

alan johnson performance engineering